

## BUILDING PLACES AND SPACES

Community  
planner

Community planning is in its infancy – but not for long. When a new law put communities at the heart of planning decisions in 2004, the need became clear for independent advisers who could liaise with the people most likely to be affected and explain proposals to them. Now, a small number of community planners (who also have to be qualified town planners) do just that. Perhaps they'll advise travellers about proposals for a permanent caravan site. Or maybe they'll help communities object to a new road or understand the redevelopment of their estate. Every day is different in this hands-on role.

## Degree needed

The RTPI's accredited degree programme is recognised as an international benchmark for planning education. However, some people enter town planning after first gaining a degree in subjects such as geography, economics or politics.

Planning education encompasses a wide range of full time, part time and distance learning qualifications.

In partnership with universities, the RTPI has developed a range of accredited spatial planning qualifications that equip graduates with a high level of knowledge. These, taken with the Assessment of Professional Competence, form the education package that leads to Chartered Membership of the RTPI.

## Good courses

- BSc (Hons) in Urban Planning, Design and Management with Diploma/MSc Town and Country Planning (University College, London)
- MPlan in Urban Studies and Planning (University of Sheffield)
- BSc (Hons) in Environmental Planning with Diploma in Environmental Planning (Anglia Ruskin University, Chelmsford)
- BA in Town and Country Planning with Diploma in Town and Country Planning (University of Central England, Birmingham)



Helen Metcalfe at work –  
Community planner, East Midlands Planning Aid Service



ask:  
what if?

Your career – our future

## Facts and figures

## Starting salary

Around £20,000.

## Working hours

36 hours a week.

## Days' holiday per year

23-25 days a year.

## Skills and experience

Community planners must be fully qualified chartered town planners with experience of working in a local authority on planning and development control.

## Would suit

Qualified town planners who enjoy working with communities and meeting a wide variety of challenges.

## Likely employer types

- Planning Aid
- Local authorities
- Large developers

## How many jobs available?

This job is in its infancy, and the RTPI believes there are only a 'handful' of posts vacant at this time, but it is expected there will be rapid growth, especially in the private sector.

## Number of people employed in this field

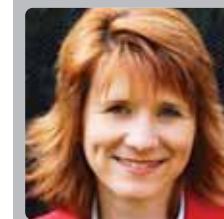
Planning Aid employs 60 and there may be a further 20-30 community planners in the local government and private sectors.



## Meet the expert

Helen Metcalfe,  
East Midlands  
Planning Aid Service

Visit [AskWhatIf.co.uk](http://AskWhatIf.co.uk) to watch video diaries and get opinions from other real people doing real jobs.



## Did you know?

Where once almost all trainee planners took up posts with local authorities, now 40% leave planning school and go into the private sector.

## More information

- For advice on planning careers visit the Royal Town Planning Institute [www.rtpi.org.uk](http://www.rtpi.org.uk)
- For information about Planning Aid [www.planningaid.rtpi.org.uk](http://www.planningaid.rtpi.org.uk)
- Read more about community planning at [www.communityplanning.net](http://www.communityplanning.net)

"It's my job to help people help themselves. I work with people from all walks of life – it's really empowering for them to understand planning issues affecting the places they live."